



2011 Apparel + Footwear

Wilson
SP:SU
2011



Innovation + Design + Desire

The 2011 Spring/Summer Wilson® Apparel and Footwear Collections were created with careful attention to smart design; crafted with special attention to every detail. We have ensured that every piece speaks to the highest level of quality, fit and finish for the end use - high level tennis performance. Our meticulous selection of functional materials and advanced construction techniques, guarantee that Wilson's 2011 Spring/Summer Apparel and Footwear Collections represent modern design.

Wilson
SP:SU
-2011

2011 Apparel Technology

Innovative technologies + design combined to create the highest quality technical performance tennis apparel in the industry. Utilizing nano-fiber technology, Wilson® further enhances performance apparel by elevating the break-through benefits of sun protection, moisture management and anti-microbial odor protection that we now offer throughout our tennis performance apparel collection.

Premium technical fabrics. Performance athletic fit.

Core Technologies



nanoWik®
Moisture management and quick-dry technology elevated to provide superior technical wicking properties with maximum breathability and enhanced comfort.



nanoBan®
Anti-microbial protection integrated for technical odor management. nanoBan stops odor causing bacteria from forming on a repeated basis in the garment.

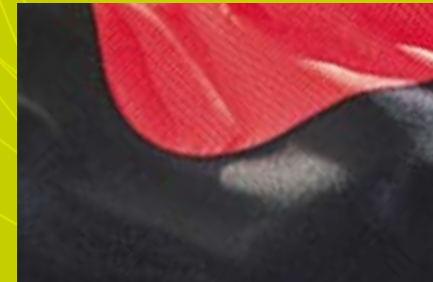


nanoUV®
Industry leading sun protection that provides UV-A and UV-B protection, blocking 97% of the sun's rays. nanoUV technology provides UPF 30+ both on and off the court.



Sustainable
Bamboo fabrications in knits are used in the 2011 Core Performance Men's Collection. Bamboo is not only sustainable, it has a high moisture management characteristic and incredibly soft hand feel. Additionally, Wilson has chosen recycled polyesters, knits and wovens in several styles.

Seasonal Advanced Technology



Zoned Ventilation
Each garment is carefully designed for true tennis performance. Our Zoned Ventilation design philosophy ensures that lightness and breathability are key features in high sweat areas of the body.



Laser Technology
By utilizing the most advanced laser technology to create precision detailing in cutting, perforation and seam sealing, we have created premium garment with no-sew seams in high stress and high movement areas of the body. The benefit is a lightweight garment with disappearing seams, laser-zoned ventilation and seamless construction for complete comfort and enhanced performance.



Abrasion Free
Wilson has created „made to move“ details specific to the needs of a tennis player; abrasion free seams at high stress points to ensure comfort; gusset systems which provide greater range of motion and unique ball pocket details for effortless use.



Body Mapping
Body Mapping utilizes the highest form of no-sew technology. Seamless, lightweight yarns are knitted together with textural variance to create a custom pattern designed to provide intrinsic moisture management with a dynamic visual presence.



nano Tech / Classic / Made to Move

Men's Core Performance

Wilson
SP:SU
2011



Body Mapping LS Crew

WRA1300001000 White / Sizes S-XXL
WRA1300007000 Black

_100% Poly Knit Body Map.
_Body mapped mesh and wicking for maximum cooling and ventilation.

Performance Polo

WRA1303001000 White / White / Sizes S-XXL
WRA1303007000 Black / Wilson Red
WRA1303004000 White / Wilson Red
WRA1303009000 Wilson Red / White
WRA1303005100 Pool / White

_100% Poly Knit.
_Mesh fabric at strategic areas and a wicking finish for maximum cooling and ventilation.



Body Mapping Crew

WRA1301001000 White / Sizes S-XXL
WRA1301007000 Black
WRA1301009000 Wilson Red

_100% Poly Knit Body Map.
_Body mapped mesh and wicking for maximum cooling and ventilation.

Straight Sets Crew

WRA1306001000 White / Black / Sizes S-XXL
WRA1306007000 Black / Wilson Red
WRA1306009000 Wilson Red / Black
WRA1306005100 Pool / White
WRA1306006200 Intense Lime / White
WRA1306006100 Platoon Green / White

_Poly / Bamboo / Charcoal Knit.
_Performance raglan short sleeve with contrast color piping and underarm mesh ventilation.



Body Mapping Polo

WRA1302001000 White / Sizes S-XXL
WRA1302007000 Black
WRA1302005100 Pool
WRA1302004000 Midnight Navy

_100% Poly Knit Body Map.
_Body mapped mesh and wicking for maximum cooling and ventilation.

SS Crew

WRA1353001000 White / Black / Red / Sizes S-XXL
WRA1353005100 Pool / White / Black
WRA1353008000 Union Gold / Black / White
WRA1353006200 Intense Lime / Black / White

_100% Poly Knit.
_Short sleeve crew neck, textured knit top with contrast mesh insets at lumbar and back cooling zones. Color block insets at front, back and neck.





Basic Woven Short

- WRA1308001000 White
 - WRA1308007000 Black
 - WRA1308004000 Midnight Navy
 - WRA1308002100 Flint Grey
 - WRA1308006100 Platoon
 - WRA1308009000 Red
- / Sizes S-XXL

_CVS Poly Woven.
 _10" (25cm) inseam knit short with stretch properties and wicking fabric finish.



Woven Short

- WRA1310001000 White / Black
 - WRA1310007000 Black / White
- / Sizes S-XXL

_CVS Poly Woven.
 _9" (23cm) inseam woven short with stretch properties, semi-elastic waistband and wicking fabric finish.



Knit Short

- WRA1311001000 White
 - WRA1311007000 Black
 - WRA1311009000 Wilson Red
- / Sizes S-XXL

_100% Poly Knit Double Pique.
 _9" (23cm) inseam knit short with double knit pique texture and wicking fabric finish.

Knit Jacket

- WRA1381007000 Black / White
 - WRA1381009000 Wilson Red / Black
- / Sizes S-XXL

_90% Cotton / 10% Poly Light Brushed Fleece.
 _Baby terry knit hoody with full zip front, front pockets and contrast mesh insets.



Knit Pant

- WRA1382007000 Black / Black
- / Sizes S-XXL

_90% Cotton / 10% Poly Light Brushed Fleece.
 _Baby terry knit pant with side seam pockets, bottom leg zips and tonal mesh side seam insets.

Woven Warm-Up

- WRA1315001000 White / Black
 - WRA1315007000 Black / White
 - WRA1315004000 Midnight Navy / White
 - WRA1315009000 White / Wilson Red / Black
- / Sizes S-XXL

_CVS Poly Woven.
 _Woven warm-up set with contrast color piecing and wicking properties.





Vintage Tee

WRA1393006100 Platoon Green / White
WRA1393007000 Black / White / Sizes S-XXL

_100% Cotton.
_Vintage wash graphic tee with retro screen print and woven applique.



Grand Slams Tee

WRA1385001000 White
WRA1385007000 Black / Sizes S-XXL

_100% Cotton.
_Graphic tee with multi color screen print.



Wilson® Tennis Tee

WRA1387001000 White
WRA1387007000 Black
WRA1387009000 Wilson Red / Sizes S-XXL

_100% Cotton.
_Graphic tee with one color screen print.



Triangle Tee

WRA1386001000 White
WRA1386007000 Black / Sizes S-XXL

_100% Cotton.
_Graphic tee with multi color screen print.

Retro Tee

WRA1391001000 White / Black
WRA1391006100 Platoon Green / Union Gold / Sizes S-XXL

_190 g/m² Jersey with Distressed Acid Wash.
_Vintage wash jersey short sleeve crew with contrast sleeves and yoke, retro screen print at front and back.



V-Neck Pullover Vest

WRA1389001000 White / Black
WRA1389007000 Black / White / Sizes S-XXL

_350 g/m² GSM French Terry + Little King Mesh Piping.
_Cotton baby terry V-neck pull over vest with contrast piping at shoulders.



Polo Shirt

WRA1384001000 White / Black
WRA1384007000 Black / White / Sizes S-XXL

_100% Cotton.
_Basic Jersey Polo Shirt with contrasted button placket and self-fabric collar.



Knit Jacket

WRA1392006100 Platoon
WRA1392007000 Black / Black / Sizes S-XXL

_100% Poly.
_Vintage Knit Zip Jacket with contrasted insets, side pockets and athletic cut.



Knit Hoody

WRA1390002000 Heather Grey / Pool
WRA1390007000 Black / Wilson Red
WRA1390006100 Platoon Green / Union Gold / Sizes S-XXL

_100% Cotton Fleece with Distressed Acid Wash.
_Vintage wash cotton/poly fleece hoody with front kangaroo pocket and front retro screen print.



Men's Spring Collection

Zoned-Cool / Laser Tech / Geometric



Wilson
SP:SU
_2011



Collins Crew

WRA1352001000 White / Intense Lime / Bark Brown / Sizes S-XXL
 WRA1352009000 Wilson Red / White / Black

- _100% Poly.
- _Textured knit crew neck short sleeve top with laser cut, no sew seams.
- _Geometric body mapped panels at front and back lumbar.



Brisben Polo

WRA1351001000 White / Intense Lime / Bark Brown / Sizes S-XXL
 WRA1351007000 Black / White / Wilson Red
 WRA1351009000 White / Red / Black

- _100% Poly.
- _Textured knit polo collar short sleeve top with laser cut, no sew collar and placket.
- _Geometric body mapped panels at front and back lumbar.

Brisben Short

WRA1357003100 Bark Brown / White / Intense Lime / Sizes S-XXL
 WRA1357007000 Black / White / Wilson Red
 WRA1357001000 White / Black / Wilson Red

- _100% Stretch Poly Woven.
- _Woven dobby textured short with mesh at back yoke and side insets.
- _Mesh side seam pockets and mesh gusset at inseam.



Collins Hoodie

WRA1350001000 White / Intense Lime / Sizes S-XXL
 WRA1350007000 Black / Wilson Red

- _100% Poly Knit.
- _Brushed back poly knit hoody with laser cut, dye-cut laminated front zip, side seam pockets, back mesh inset and fully lined mesh hood.



Flinders Knit Pant

WRA1331001000 White / Black / Sizes S-XXL
 WRA1331007000 Black / White

- _100% Poly Knit.
- _Performance pant with articulated mesh side knee gusset for movement and ventilation.
- _Adjustable Velcro waist band tab.



Men's Summer Collection

Abrasion-Free / Lightweight / Asymmetrie



Wilson
SP:SU
2011



Somerset Short

WRA1361001000 White / Pool / Flint Grey / Sizes S-XXL
 WRA1361006100 Platoon Green / Union Gold / White

- _100% Stretch Poly Woven.
- _Textured woven short with mesh back yoke and unique laser cut, no sew, contrast insets at outside.
- _Mesh pockets, mesh inseam gusset and gripper elastic waist band.



Bennett Crew

WRA1360005100 Pool / Flint Grey / White / Sizes S-XXL
 WRA1360001000 White / Union Gold / Platoon Green

- _100% Poly.
- _Textured knit short sleeve crew neck top with laser asymmetrical mesh insets.
- _Custom body mapped insets at back and front.



Somerset Polo

WRA1383005100 Pool / White / Flint Grey / Sizes S-XXL
 WRA1383008000 Union Gold / Platoon / White

- _100% Poly.
- _Textured knit short sleeve polo collar top with laser cut, no sew seams.
- _Custom body mapped insets at back and front.



Women's Core Collection

nano Tech / Classic / Made to Move



Wilson
SP:SU
2011



Performance Tank

WRA3300001000 White / Sizes XS-XL
 WRA3300007000 Black
 WRA3300003300 Deep Lavender / White
 WRA3300005300 Oceana

_88% Poly / 12% Spandex Knit.
 _Sleeveless tank, mesh top yoke, edge binding.

Garden LS Pullover

WRA3331001010 White / White / Sizes XS-XL
 WRA3331007000 Black / Black

_88% Poly / 12% Spandex Knit.
 _Low mock zip front with mesh sleeve, mesh underarm detail.



SS V-Neck

WRA3301001000 White / Sizes XS-XL
 WRA3301007000 Black
 WRA3301005100 Pool
 WRA3301008100 Orange Peel
 WRA3301005300 Oceana

_88% Poly / 12% Spandex Knit.
 _Soft V-neck line with mesh insets at under arm.

CP Sports Bra

WRA3353001000 White / Sizes XS-L
 WRA3353007000 Black

_88% Poly / 12% Spandex Knit.
 _Fully lined bra with back mesh and elastic terry band.



SS Polo

WRA3302001000 White / Sizes XS-XL
 WRA3302009000 White / Wilson Red
 WRA3302007000 Black / White
 WRA3302003300 Deep Lavender / White

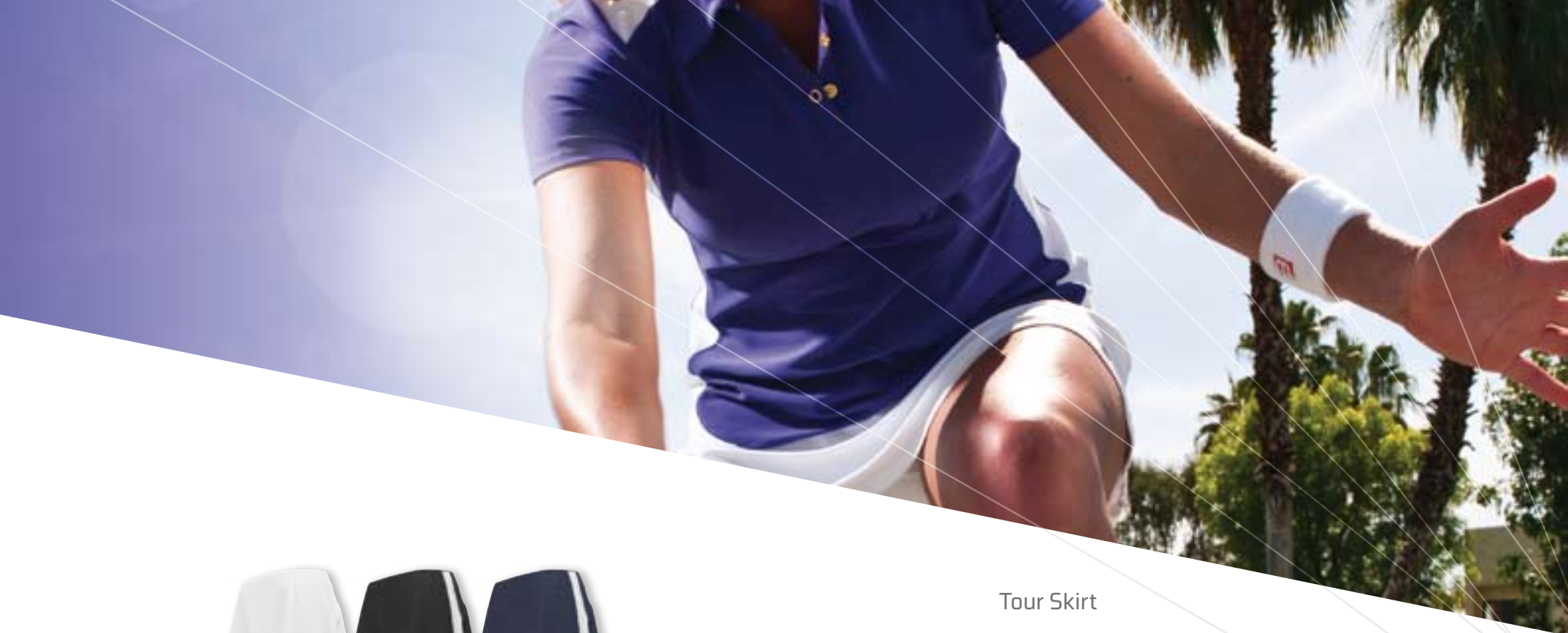
_88% Poly / 12% Spandex.
 _Snap front polo with mesh top yoke and side inserts.

Seamless Bra

WRA3355001000 White / Sizes XS-L
 WRA3355007000 Black

_88% Poly / 12% Spandex Knit.
 _Fully seamless double-lined bra with adjustable straps.





Tour Skirt

WRA3306001000 White / Sizes XS-XL
 WRA3306007000 Black / White
 WRA3306004000 Navy / White

_88% Poly / 12% Spandex Knit.
 _12.5" (32cm) skirt with side inset, back mesh panel, compression short.



Performance Skirt

WRA3307001000 White / Sizes XS-XL
 WRA3307007000 Black
 WRA3307005100 Pool
 WRA3307003300 Deep Lavender
 WRA3307005300 Oceana

_88% Poly / 12% Spandex Knit.
 _13.5" (34cm) flare skirt with back mesh panel, compression short.

Woven Short

WRA3309001000 White / Black / Sizes XS-XL
 WRA3309007000 Black / White

_84% Poly / 16% Spandex Woven.
 _Fixed waist short with front pockets, mesh back yoke.



Tea Lawn Dress

WRA3363001000 White / Black / Sizes XS-XL
 WRA3363007000 Black / White

_88% Poly / 12% Spandex Knit.
 _Elastic strap tank dress with internal bra and back mesh inserts.



Compression Short

WRA3444001000 White / Sizes XS-XL
 WRA3444007000 Black

_84% Poly / 16% Spandex Knit.
 _Compression short with mesh back yoke ball holder.
 _2.5" (6 cm) inseam and mesh gusset.





Stretch Woven Warm-Up

WRA3322001000 White / Black
 WRA3322004000 White / Navy
 WRA3322007000 Black / White

/ Sizes XS-XL

_100% Poly Stretch Woven.
 _Mock neck fully lined jacket, front zip pockets.



Stretch Knit Hooded Jacket

WRA3320001000 White / Black
 WRA3320007000 Black / White

/ Sizes XS-XL

_57% Cotton / 39% Poly / 4% Spandex Knit.
 _Fitted jacket with mesh strips at sleeves, back "W" applique.

Stretch Knit Pant

WRA3321001000 White / Black
 WRA3321007000 Black / White

/ Sizes XS-XL

_57% Cotton / 39% Poly / 4% Spandex Knit.
 _Low rise knit pant with side seam pockets, back "W" applique.





Tank

WRA3449001000 White / Pool
 WRA3449007000 Black / Pool / Sizes XS-XL

_100% Cotton Jersey.
 _Contoured sleeveless tank with front gathers, contrast binding at neck and sleeve opening.



Short

WRA3450005100 Pool / Black
 WRA3450007000 Black / Pool / Sizes XS-XL

_100% Cotton Jersey.
 _Knit practice short with front slant pockets, contrast binding, 2.5" (6 cm) inseam.



Grand Slam Tee

WRA3447001000 White
 WRA3447007000 Black / Sizes XS-XL

_100% Cotton Jersey.
 _Wilson world wide, Grand Slam graphic tee in light weight cotton, contoured fit.



Wilson® Tee

WRA3452001000 White
 WRA3452003300 Deep Lavender / Sizes XS-XL

_100% Cotton Jersey.
 _"W" multi-colored graphic practice tee, lightweight cotton, contoured fit.

LS Mock Zip

WRA3451005100 Pool / Black
 WRA3451007000 Black / Pool / Sizes XS-XL

_100% Cotton Jersey.
 _Mock neck zip jacket with contoured front pocket, gathers at shoulder and rib at sleeve and hem.



Women's Spring Collection

Crafted / Laser Tech / Kaleidoscope



Wilson
SP:SU
2011



La Divine Tank

WRA3362001000 White / Deep Lavender / Pool / Sizes XS-XL
WRA3362005100 Pool / Deep Lavender / White

_88% Poly / 12% Spandex.
_Multi-colored contoured racer back tank with laser cut, bonded mesh side panels and full back mesh for complete comfort and playability.
_Internal sports bra with power mesh and nanoWik technology for superior support and breathability.



La Divine Skirt

WRA3368001000 White / Deep Lavender / Pool / Sizes XS-XL
WRA3368005100 Pool / Deep Lavender / White

_88% Poly / 12% Spandex.
_12.5" (32cm) skirt with geometric laser cut, bonded design detailing with internal back ball pocket, contrast compression short and back waist band, sleek semi A-line fit.



Melben Tank

WRA3365003300 Deep Lavender / Pool / White / Sizes XS-XL
WRA3365001000 White / Deep Lavender / Black

_88% Poly / 12% Spandex.
_Blousen tank laser cut, bonded geometric design detailing, dye-cut laminated mesh side panels and full mesh back.
_Relaxed fit with semi-racer back, internal sport bra with power mesh and nanoWik technology for superior support and breathability.



Melben Skirt

WRA3367003300 Deep Lavender / Pool / White / Sizes XS-XL
WRA3367001000 White / Deep Lavender / Pool

_88% Poly / 12% Spandex.
_13.5" (34cm) multi-colored skirt with laser cut, bonded design detailing, triple pleats, contrast compression short and internal back ball pocket, relaxed fit.

Melben Tee

WRA3361001000 White / Deep Lavender / Pool / Sizes XS-XL
WRA3361005100 Pool / Deep Lavender / White

_88% Poly / 12% Spandex.
_Duo-colored V-neck performance tee with laser cut, bonded mesh side panels and contoured full mesh back, contrast color insets at sides.



La Divine Dress

WRA3366001000 White / Deep Lavender / Pool / Sizes XS-XL
WRA3366003300 Deep Lavender / White / Pool

_88% Poly / 12% Spandex.
_Geometric laser cut, bonded design detailing, dye-cut laminated mesh side panels and full mesh back, back hem vents.
_Semi-racer back, internal sports bra with power mesh and nanoWik technology for superior support and breathability.



Yarra Knit Jacket

WRA3336001000 White / Sizes XS-XL
WRA3336007000 Black

_88% Poly / 12% Spandex.
_Zip-front jacket with side pockets. Mesh inset details.



La Divine Capri

WRA3369007000 Black / Pool / Sizes XS-XL

_92% Poly / 8% Spandex.
_Capri length compression pant with back mesh yoke and ball pocket storage.
_Mesh gusset at crotch, and contrast color detail at bottom hem.



Women's Summer Collection

Lightweight / Laser Perforation / Asymmetry



Wilson
SP:SU
2011



Monarch Dress

WRA3373001000 White / Pale Jade / Sizes XS-XL
 WRA3373008100 Orange Peel / Sheer Orange

_88% Poly / 12% Spandex.
 _86% Cationic-Dyeable / 14% Spandex.
 _Asymmetrical multi-mesh T-back tank dress with back laser cut vent design detailing, front midriff gathers, mesh side panels and internal support bra with power mesh and nanoWik technology for comfort and playability.



Monarch Skirt

WRA3374001000 White / Pale Jade / Sizes XS-XL
 WRA3374008100 Orange Peel / White

_88% Poly / 12% Spandex.
 _12.5" (32cm) dual layered mesh skirt with back ball pocket, contrast compression short and contrast binding.



Manor Skirt

WRA3375006300 Pale Jade / White / Sizes XS-XL
 WRA3375001000 White / Orange Peel

_88% Poly / 12% Spandex.
 _13.5" (34cm) symmetrical multi-mesh skirt with ball pocket, slim waist band binding, contrast compression short.



Monarch Tank

WRA3371001000 White / Sizes XS-XL
 WRA3371006300 Pale Jade / Sheer Sky / White
 WRA3371008100 Orange Peel / Sheer Orange / White

_88% Poly / 12% Spandex.
 _Contoured T-back tank with back laser cut air vent design detailing, front midriff gathers, mesh side panels, and internal support bra with power mesh and nanoWik technology for comfort and playability.



Monarch Tee

WRA3370001000 White / Sizes XS-XL
 WRA3370006300 Pale Jade / Sheer Sky
 WRA3370008100 Orange Peel / Sheer Orange Peel

_88% Poly / 12% Spandex.
 _Asymmetrical, multi-mesh tee with soft square neck, mesh side panels and cap sleeves.



Boys Collection

nano Tech / Classic / Made to Move

Wilson
SP:SU
2011

Jr. Straight Sets Crew

WRA2204001000 White / Black
WRA2204005100 Pool / White
WRA2204007000 Black / Wilson Red
WRA2204009000 Wilson Red / Black

/ Sizes S-XL



_Poly / Bamboo / Charcoal Knit.
_Performance raglan short sleeve with contrast color piping and underarm mesh ventilation.

Jr. Performance Polo

WRA2213001000 White / White
WRA2213005100 Pool / White
WRA2213009000 Wilson Red / White

/ Sizes S-XL



_100% Poly Knit.
_Mesh fabric at strategic areas and a wicking finish for maximum cooling and ventilation.

Jr. New Crew

WRA2220001000 White / Black / Wilson Red
WRA2220005100 Pool / White / Black
WRA2220008000 Union Gold / Black / White

/ Sizes S-XL



_100% Poly Knit.
_Short sleeve crew neck, textured knit top with contrast mesh insets at lumbar and back cooling zones. Color block insets at front, back and neck.



Jr. Grand Slams Tee

WRA2222001000 White
WRA2222007000 Black

/ Sizes S-XL

_100% Cotton.
_Graphic tee with multi color screen print.



Jr. Wilson® Tee

WRA2223009000 Wilson Red

/ Sizes S-XL

_100% Cotton.
_Graphic tee with one color screen print.



Jr. Knit Short

WRA2215001000 White
WRA2215007000 Black
WRA2215009000 Wilson Red

/ Sizes S-XL

_100% Poly Knit.
_7" (18 cm) inseam knit short with stretch properties and wicking fabric finish.



Jr. Woven Short

WRA2219001000 White
WRA2219007000 Black

/ Sizes S-XL

_100% Poly Woven.
_8" (20 cm) inseam woven short with stretch properties and wicking fabric finish.

Jr. Woven Warm-Up

WRA2216001000 White / Navy
WRA2216007000 Black / White
WRA2216004000 Navy / White
WRA2216009000 White / Red

/ Sizes S-XL

_CVS Poly Woven.
_Woven warm-up set with contrast color piecing and wicking properties.



New Jr. Knit Warm-Up

WRA2224007000 Black / White
WRA2224009000 Wilson Red / Black

/ Sizes S-XL

_90% Cotton / 10% Poly Light Brushed Fleece.
_Baby terry knit hoody with full zip front, front pockets and contrast mesh insets.
_Baby terry knit pant with side seam pockets, bottom leg zips and tonal mesh side seam insets.



Girls Collection

nano Tech / Classic / Made to Move



Wilson
SP:SU
2011

Jr. SS V-Neck

WRA4202001000 White / Sizes S-XL
WRA4202007000 Black
WRA4202005100 Pool

_91% Poly / 9% Spandex Knit.
_Soft V-Neck line with mesh insets at under arm.



Jr. SS Polo

WRA4214001000 White / Sizes S-XL
WRA4214007000 Black / White
WRA4214009000 White / Wilson Red

_91% Poly / 9% Spandex Knit.
_Snap front polo with mesh top yoke and side insets.



Jr. Tour Skirt

WRA4215001000 White / Sizes S-XL
WRA4215007000 Black / White

_91% Poly / 9% Spandex Knit.
_12" (30cm) skirt with side contrast inset, back mesh panel, compression short.



Jr. Knit Short

WRA4216001000 White / Black / Sizes S-XL
WRA4216007000 Black / White

_93% Poly / 7% Spandex Knit.
_Mesh knit short with back ball pocket, internal compression short.





Jr. Stretch Woven Warm-Up

WRA4218004000 White / Navy
WRA4218007000 Black / White / Sizes S-XL

_100% Poly Stretch Woven.
_Mock neck fully lined jacket, front zip pockets.



Jr. Stretch Knit Warm-Up

WRA4217001000 White / Black
WRA4217007000 Black / White / Sizes S-XL

_57% Cotton / 39% Poly / 4% Spandex.
_Fitted jacket with mesh strips at sleeves, back "W" applique.
_Low rise knit pant with side seam pockets, back "W" applique.

Jr. SS Crew

WRA4200003300 Deep Lavender / White
WRA4200001000 White / Pool / Sizes S-XL

_91% Poly / 9% Spandex Knit.
_Duo colored crew neck tee with mesh insets and contrasted sleeves.



Performance Dress

WRA4207003300 Deep Lavender / White
WRA4207001000 White / Pool / Sizes S-XL

_91% Poly / 9% Spandex Knit.
_Duo colored Performance dress with gathered details at the front and mesh insets in the back.



Elite Skirt

WRA4206005100 White / Pool
WRA4206003300 Deep Lavender / White / Sizes S-XL

_91% Poly / 9% Spandex Knit.



Jr. Wilson Tee

WRA4220001000 White
WRA4220003300 Deep Lavender / Sizes S-XL

_100% Cotton Jersey.
_"W" multi-colored graphic practice tee, lightweight cotton, contoured fit.





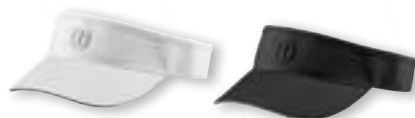
Performance Cap

WRA5000001000 White
 WRA5000007000 Black / White
 WRA5000003300 Deep Lavender / White



Summer Cap

WRA5000101000 White
 WRA5000107000 Black
 WRA5000109000 Wilson Red
 WRA50010AST Assorted



Visor

WRA5200001000 White
 WRA5200007000 Black



Lifestyle Cap

WRA5000201000 White
 WRA5000202100 Flint Grey



Beanie

WRA5400007000 Black



Bandanas

WRA5400101000 White
 WRA5400107000 Black
 WRA54010AST Assorted



Headbands

WRA5600101000 White
 WRA5600107000 Black
 WRA5600109000 Wilson Red



W® Wristbands

WRA5600201000 White
 WRA5600207000 Black
 WRA5600203300 Deep Lavender



Double Wristbands

WRA5600301000 White
 WRA5600307000 Black
 WRA5600306100 Platoon Green
 WRA5600305100 Pool
 WRA5600309000 Wilson Red

Apparel Fit Guide

SIZES	INTERNATIONAL	UK	FR	GER	ITA
MEN	SM	36/38	44/48	44/48	44/48
	MD	40/42	48/52	48/50	48/52
	LG	42/44	52/56	52/54	52/56
	XL	46/48	56/58	56/58	56/58
	XXL	48/50	60/62	58/60	60/62

SIZES	INTERNATIONAL	UK	FR	GER	ITA
WOMEN	XS	6/8	34/36	32/34	36/38
	SM	8/10	38/40	34/36	40/42
	MD	12/14	40/42	38/40	42/44
	LG	14/16	44/46	40/42	46/48
	XL	18/20	46/48	42/44	48/50

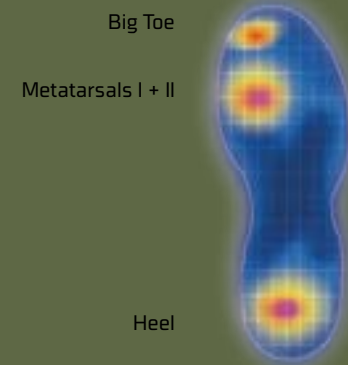
SIZES	INTERNATIONAL	FR	GER
BOYS	SM	8A	128
	MD	10A	140
	LG	12A	152
	XL	14A	164

SIZES	INTERNATIONAL	FR	GER
GIRLS	SM	8A	128
	MD	10A	140
	LG	12A	152
	XL	14A	164





RG TECHNOLOGY Reactive Gel reacts to the stress and force placed on it to provide optimal cushioning, energy return, stability and dynamic movement support. Maximum energy return and superior shock absorption is provided by three-dimensional compression of the highly resilient reactive gel inserts located in the key pressure points.



KEY PRESSURE POINTS IN TENNIS



RG CONSTRUCTION
Reactive Gel insert in midsole to cover heel stress point.

Extended reactive gel insert in forefoot midsole to cover metatarsals I and II plus the big toe stress points.



REACTIVE GEL INSERT
Reactive gel locks into the outsole and midsole. This provides supreme stability and optimal cushioning with maximum energy return.

2011 Footwear Technology

Wilson
SP:SU
2011



Additional footwear technologies



DST Foam
Utilizes an exclusive blend of EVA and rubber to achieve a responsive cushioning system that provides the player with exceptional court feel - better impact absorption, better energy return, lighter weight.



Stable Wrap
Stable Wrap technology wraps under the midsole edge and extends to the eyestay to provide enhanced medial and lateral support.



Duratex
For serious toe draggers, Wilson® has created a high abrasion-resistant material that lasts on the grittiest, toughest hard courts.



nanoWIK®
Utilizes a nano technology lining that transfers moisture away from the skin, keeping your foot cool and dry.



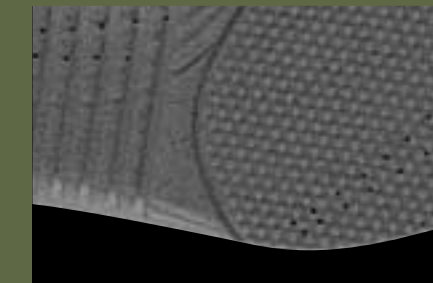
Duralast Supreme
Exclusive high-density, extremely durable rubber compound for super abrasion resistance on hard courts and maximum court surface contact for precision footwork.



Innerloc
Debossed support zones with direct-inject overlay webbing are integrated with the lacing system to provide optimal fit and feel.



Stable Chassis
TPU system that encompasses the midfoot and heel for superior support and stability.



Ortholite®
Odor and fungus inhibiting sockliner that provides air flow and permeability, and transports moisture away from the foot which leads to long-lasting cushion comfort.



Wilson
SP:SU
_2011

Men's / Women's Footwear



Men

Women



WRS981600 White / Black / Blue
WRS981700 White / Black / Red
UK Sizes 6.5-11.5,12.5,13.5

RG
Tour Vision
All-Court Full Herringbone Outsole with Pivot Point, Integrated TPU Arch Bridge, RG Heel & Forefoot Inserts, DST Foam Full-Length Midsole, DST Foam Insole Board, Ortholite® Comfort Foam Sockliner, Soft-Molded TPU Stable Wrap, High Abrasion Over-Molded Toe Guard, nanoWik Moisture Management Lining.



WRS983400 White / Silver / Black
WRS983500 Black / Pool
UK Sizes 3.5-8, 9

All-Court Full Herringbone Outsole with Pivot Point, Integrated TPU Arch Bridge, RG Heel & Forefoot Inserts, DST Foam Full-Length Midsole, DST Foam Insole Board, Ortholite® Comfort Foam Sockliner, Soft-Molded TPU Stable Wrap, High Abrasion Over-Molded Toe Guard, nanoWik Moisture Management Lining.

RG
Tour Vision



WRS981800 Black / Red
UK Sizes 6.5-11.5,12.5,13.5

RG
Tour Spin II
All-Court Full Herringbone Outsole with Pivot Point, Integrated TPU Arch Bridge, RG Heel & Forefoot Inserts, DST Foam Full-Length Midsole, DST Foam Insole Board, Ortholite® Comfort Foam Sockliner, TPU Stable Chassis, Innerloc Support Zones, High-Abrasion Rubber Toe Wrap, nanoWik Moisture Management Lining, Breathable, Foot-Conforming Ballistic Closed Mesh Upper.



WRS983600 Black / Deep Lavender
UK Sizes 3.5-8, 9

All-Court Full Herringbone Outsole with Pivot Point, Integrated TPU Arch Bridge, RG Heel & Forefoot Inserts, DST Foam Full-Length Midsole, DST Foam Insole Board, Ortholite® Comfort Foam Sockliner, TPU Stable Chassis, Innerloc Support Zones, High-Abrasion Rubber Toe Wrap, nanoWik Moisture Management Lining, Breathable, Foot-Conforming Ballistic Closed Mesh Upper.

RG
Tour Spin II



WRS982000 White / Red / Black
WRS982100 Black / Lime
UK Sizes 6.5-11.5,12.5,13.5

RG
Tour Phantom
All-Court Full Herringbone Outsole with Pivot Point, Integrated TPU Arch Bridge, RG Heel & Forefoot Inserts, DST Foam Full-Length Midsole, DST Foam Insole Board, Ortholite® Comfort Foam Sockliner, Soft-Molded Stable Wrap, High Abrasion Over-Molded Toe Guard, Mesh Lining Throughout Entire Length of Shoe, Lightweight, Full-Grain Leather Upper.



WRS983700 White / Silver
WRS983800 White / Orange Peel
UK Sizes 3.5-8, 9

All-Court Full Herringbone Outsole with Pivot Point, Integrated TPU Arch Bridge, RG Heel & Forefoot Inserts, DST Foam Full-Length Midsole, DST Foam Insole Board, Ortholite® Comfort Foam Sockliner, Soft-Molded Stable Wrap, High Abrasion Over-Molded Toe Guard, Mesh Lining Throughout Entire Length of Shoe, Lightweight, Full-Grain Leather Upper.

RG
Tour Phantom



RG
Trance Vision

Clay Court Low-Profile Full Herringbone Outsole, Carbon Graphite Arch Bridge, RG Heel & Forefoot Inserts, DST Foam Full-Length Midsole, DST Foam Insole Board, Ortholite Comfort Foam Sockliner, TPU Stable Wrap, Carbon Fiber Quarter Support, Multilayer Triangle Forefoot Support, High-Abrasion Over-Molded Toe Guard, nanoWik Moisture Management Lining.

WRS982200 Black / Red
UK Sizes 6.5-11.5, 12.5, 13.5



RG
Trance Strike

Clay Court Low-Profile Full Herringbone Outsole, Carbon Graphite Arch Bridge, RG Heel & Forefoot Inserts, DST Foam Full-Length Midsole, DST Foam Insole Board, TPU Stable Wrap, Carbon Fiber Quarter Support, High-Abrasion Over-Molded Toe Guard, nanoWik Moisture Management Lining.

WRS976900 White / Black / Red
WRS982300 White / Black / Lime
WRS982400 Blue / Black / Silver
UK Sizes 6.5-11.5, 12.5, 13.5



Trance Impact
Trance Impact AC

Clay Court and All-Court Low-Profile Full Herringbone Outsole, Injected TPU Shank, DST Foam Full-Length Midsole, DST Foam Insole Board, Molded Stable Wrap, TPU Stability Chassis, Triangle Forefoot Support, Duratex Toe Protection, Mesh Lining Throughout Entire Length of Shoe.

WRS982500 White / Black / Lime
WRS982600 Black / Red
WRS982700 White / Black / Lime (All-Court)
UK Sizes 6.5-11.5, 12.5, 13.5

Men



Women

WRS977900 White / Silver
WRS984000 White / Silver / Deep Lavender
UK Sizes 3.5-8



Clay Court Low-Profile Full Herringbone Outsole, Carbon Graphite Arch Bridge, RG Heel & Forefoot Inserts, DST Foam Full-Length Midsole, DST Foam Insole Board, TPU Stable Wrap, Carbon Fiber Quarter Support, High-Abrasion Over-Molded Toe Guard, nanoWik Moisture Management Lining.

RG
Trance Strike

WRS984100 White / Black
WRS984200 White / Silver / Orange Peel
WRS984300 White / Black (All-Court)
UK Sizes 3.5-8, 9



Clay Court and All-Court Low-Profile Full Herringbone Outsole, Injected TPU Shank, DST Foam Full-Length Midsole, DST Foam Insole Board, Molded Stable Wrap, TPU Stability Chassis, Triangle Forefoot Support, Duratex Toe Protection, Mesh Lining Throughout Entire Length of Shoe.

Trance Impact
Trance Impact AC

Men



WRS982800 White / Black
WRS982900 White / Pool
UK Sizes 6.5-11.5, 12.5, 13.5

Pro Staff® Trigor
All-Court Full Herringbone Outsole, Injected TPU Shank, Full Length Injection Molded DST Foam Midsole, DST Foam Insole Board, Molded Stable Wrap, Duratex Toe Protection, Mesh Lining Throughout Entire Length of Shoe, Soft, Full-Grain Leather Upper.



WRS983100 White / Black
WRS983200 White / Navy / Silver
WRS983300 Black / Silver
UK Sizes 6.5-11.5, 12.5

Pro Staff® Court
All Court Full Herringbone Outsole, EVA Midsole, Twin-Stable Wrap, Leather Upper.

Women



WRS984400 White / Silver
WRS984500 White / Deep Lavender
UK Sizes 3.5-8, 9



All-Court Full Herringbone Outsole, Injected TPU Shank, Full Length Injection Molded DST Foam Midsole, DST Foam Insole Board, Molded Stable Wrap, Duratex Toe Protection, Mesh Lining Throughout Entire Length of Shoe, Soft, Full-Grain Leather Upper.

Pro Staff® Victress

WRS984700 White / Silver
WRS984800 White / Pool
UK Sizes 3.5-8, 9



All Court Full Herringbone Outsole, EVA Midsole, Twin-Stable Wrap, Leather Upper.

Pro Staff® Court



Junior's Footwear

Wilson
SP:SU
2011

WRS984900 White / Black / Blue

UK Sizes 13.5, 1-5.5



New Lightweight All-Court Herringbone Outsole, DST Foam Heel & Forefoot, Soft Molded TPU Stable Wrap, Full Duratex Vamp & Toe Protection, nanoWik Moisture Management Lining.

Tour
Vision Jr

WRS985000 White / Black / Lime
WRS985100 Black / Red

UK Sizes 13.5, 1-5.5



New Lightweight All-Court Herringbone Outsole, DST Foam Heel & Forefoot, Molded Stable Wrap, Duratex Toe Protection, nanoWik Moisture Management Lining.

Trance
Impact Jr

WRS985200 White / Black / Red

UK Sizes 13.5, 1-5.5



New Lightweight All-Court Herringbone Outsole, DST Foam Heel & Forefoot, Soft Molded Stable Wrap, Duratex Vamp & Toe Protection.

Tour
Phantom Jr

WRS985300 White / Silver
WRS985400 White / Navy / Silver
WRS964700 White / Navy / Silver
(Advantage Court Velcro)

UK Sizes 10.5, 11.5, 12.5, 13.5, 1-5.5



All-Court Full Herringbone Outsole, EVA Midsole, Twin-Stable Wrap, Leather Upper.

Pro Staff®
Court Jr

MEN'S SIZING

US	6	6 1/2	7	7 1/2	8	8 1/2	9	9 1/2	10	10 1/2	11	11 1/2	12	12 1/2	13	14	15
UK	5 1/2	6	6 1/2	7	7 1/2	8	8 1/2	9	9 1/2	10	10 1/2	11	11 1/2	12	12 1/2	13	14 1/2
EUR	39	39 2/3	40 1/3	41	41 1/3	42	42 2/3	43 1/3	44	44 2/3	45 1/3	46	46 2/3	47 1/3	48	49 1/3	50 2/3

WOMEN'S SIZING

US	4 1/2	5	5 1/2	6	6 1/2	7	7 1/2	8	8 1/2	9	9 1/2	10	10 1/2	11	12
UK	2 1/2	3	3 1/2	4	4 1/2	5	5 1/2	6	6 1/2	7	7 1/2	8	8 1/2	9	10
EUR	35	35 2/3	36 1/3	37	37 2/3	38 1/3	39	39 2/3	40 1/3	41	41 1/3	42	42 2/3	43 1/3	44 2/3

JUNIOR'S SIZING

US	11	12	13	1	1 1/2	2	2 1/2	3	3 1/2	4	4 1/2	5	5 1/2	6	6 1/2
UK	10 1/2	11 1/2	12 1/2	13 1/2	1	1 1/2	2	2 1/2	3	3 1/2	4	4 1/2	5	5 1/2	6
EUR	28 2/3	30	31 1/3	32 2/3	33 1/3	34	34 2/3	35 1/3	36	36 1/2	37	37 2/3	38 1/3	39	39 2/3



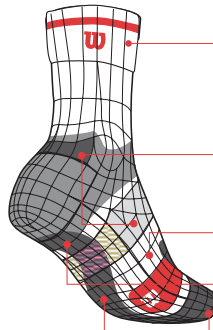
WRW201W30 (1-pair / White / 39-42)
WRW204W30 (1-pair / White / 43-46)

Ergostep®

Wilson's ultimate tennis sock featuring a comfort welt for secure fit, arch and ankle support, ventilation zones, improved shock absorption, left and right anatomical toe with padding and great moisture wicking properties.

ERGOSTEP®

AN ERGONOMIC SOCK THAT PERFECTLY ADAPTS TO PLAYERS NEED
INCLUDES **REAL COOL COTTON®** TO KEEP YOU COOL AND DRY



- COMFORT WELT FOR SECURE FIT
- ARCH AND ANKLE SUPPORT FOR IMPROVED STABILITY
- VENTILATION ZONES FOR MORE STABILITY
- IMPROVED CUSHIONING FOR SHOCK ABSORPTION
- LEFT AND RIGHT ANATOMICAL TOE WITH PADDING FOR PERFECT FIT AND PROTECTION
- POLYESTER BLEND FOR MOISTURE WICKING PROPERTIES

Socks Men (Sizing 39-46)



WRW401W30 (1-pair / White)

Ergostep®

Wilson's ultimate tennis sock featuring a comfort welt for secure fit, arch and ankle support, ventilation zones, improved shock absorption, left and right anatomical toe with padding and great moisture wicking properties.



Socks Women (Sizing 37-42)



WRW2D1W10 (1-pair / White / 39-42)
WRW2D2W10 (1-pair / White / 43-46)

Balance Point®

The choice for those looking for a slightly thicker tennis sock and added padding. Offers great stability and comfort features such as arch and ankle support, ventilation zones and additional toe padding. Preferred by many Pros.



W2G1W3 (3-pair / White)
W2G2B3 (3-pair / Black)

Crew RCC®

A great tennis sock with Real Cool Cotton® technology for long lasting fit and comfort on the court.



WRW8F1W30 (3-pair / White)
WRW8F2B30 (3-pair / Black)

Trainer Liner RCC®

A trainer liner with Real Cool Cotton® technology. Ultimate comfort and fit for hot summer days on the court.



WRW426W30 (3-pair / White)

Crew RCC®

A great tennis sock with Real Cool Cotton® technology for long lasting fit and comfort on the court. In neutral colors to fit all Wilson Footwear.



WRW515W30 (3-pair / White)

Trainer Liner RCC®

A trainer liner with Real Cool Cotton® technology. Ultimate comfort and fit for hot summer days on the court.



WRW416W30 (3-pair / White)

Quarter

A basic quarter sock with Ultra Fresh® moisture wicking and anti-bacterial properties.



WRW274W30 (3-pair / White)
WRW275B30 (3-pair / Black)

Crew

A basic tennis sock with Ultra Fresh® moisture wicking and anti-bacterial properties.



WRW1B1W30 (3-pair / White, Navy)

Crew Boys

A fun sock for boys featuring Ultra Fresh® moisture wicking and anti-bacterial properties.



WRW1B2W30 (3-pair / White, Pink)

Crew Boys

A fun sock for girls featuring Ultra Fresh® moisture wicking and anti-bacterial properties.

Socks Junior(Sizing 31-34)



The details in this catalogue are accurate at the time of printing. However, Wilson Sporting Goods Co. reserves the right to make changes, introduce new lines or discontinue old ones as necessary. The products displayed in this catalogue are reproduced within the limitations of the four colour printing process. We cannot guarantee that all models will be available in every market. Amer Sports, Pro Staff, nano Technology, nanoWik, nanoBan, nanoUV, W and Wilson are trademarks which distinguish the fine products of Wilson Sporting Goods or Amer Sports Deutschland GmbH. Ergostep, Balance Point, Real Cool Cotton, Ultra Fresh are trademarks of Delta Galil Industries. Ortholite is a trademark of O2 Partners LLC/Ortholite. Trademarks advertised other than those of Wilson Sporting Goods Co. are properties of their respective companies.

Amer Sports Europe Services GmbH 2010
European, Middle East and African Corporate Headquarters:
Racket Sports & Team Sports, Export | Amer Sports Europe Services GmbH | Parkring 15-17 | 85748 Garching | Germany | Tel: +49-89-89801-102 | Fax: +49-89-89801-129

Editing/Production: na adwork, Königswinter

Wilson
SP:SU
2011